

Black and White



Made by Grand
Medical Group

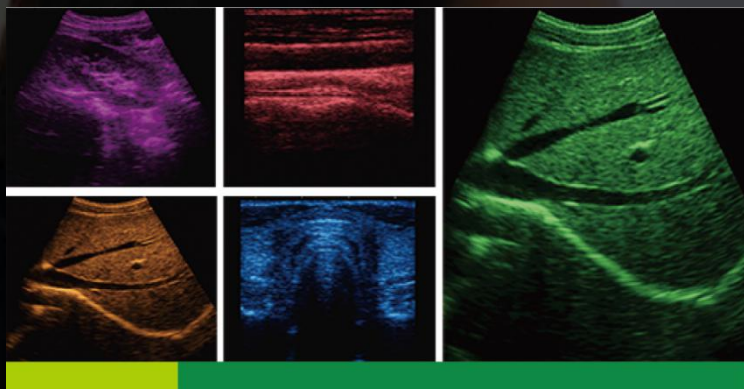
Mobile Doppler Ultrasound



HB-200

15" B/W Mobile Ultrasound Machine

OB&GYN, Urology, Abdomen, Small parts, Cardiology, Vascular



Overview

- 15 inch HD color LCD display with wide angle view
- Rich clinical measurement package, including General measurement/GYN&OB measurement/Cardiac measurement
- Probe frequency from 3.5MHz-9.5MHz
- THI and Histogram function
- Support OB Report
- Maximum 655 frames video playback, image automatic loop demonstration
- 17-lever local zoom can be used at real time
- 2 Active transducers ports



Various Probes

1. Convex probe
2. Linear probe
3. Transvaginal probe
4. Micro-convex probe
5. Rectal probe



Performance

- Sharper & Continuous edges
- Smooth Uniform Tissues
- Cleaner 'no echo areas'
- Support Various pseudo-color
- Efficient data management system
- USB interface for real-time image storage
- Support image and text printing
- A wide range of clinical applications



Technical data

1. Monitor: 15 inch LED screen
2. Scanning method: convex/linear/micro-convex
3. Probe ports: ≥ 2 active
4. Language: CN/EN
5. Display mode: B, B+B, 4B, B+M, M
6. Focus: Electronic focus, position adjustable
7. Body mark: ≥ 4 kinds
8. Probe frequency: 2.5MHz, 3.5MHz, 4.5MHz, 5.5MHz, 6.5MHz, 7.5MHz, 8.5MHz
9. Image mode: up/down, left/right
10. Measurement: distance, diameter, area, volume, heart rate, gestational age (BPD, GS, CRL, FL, HC, AC, EDD, AFI) and EDD, fetal weight, etc.
11. Note: date, time, name, gender, age, doctor, hospital, note for organs
12. Cine loop: ≥ 655 frames
13. Storage: through USB (storable and readable)
14. With two kinds of obstetric table for options (for different race)
15. With stone positioning function
16. Dynamic range: 64-192dB
17. TGC: 8 segment
18. Pre process: Variable aperture, dynamic apodization, dynamic digital filtering, etc.
19. Post process: Frame correlation, dot line correlation, 7 pseudo color processing, etc.
20. Blind zone: ≤ 4
21. Max scanning depth: 250mm
22. Geometric accuracy: lateral $\leq 5\%$, longitudinal $\leq 5\%$
23. Resolution: lateral ≤ 2 mm, axial ≤ 1 mm
24. Interface: PAL-D video, USB interface
25. Magnification: ≥ 30 display modes
26. Gain control: 0~100
27. Four report generation modes
28. Machine size: 740x520x1210mm (L*W*H)
29. NW: 26.6kg, GW: 38.5kg
30. Packing size: 81*61*96cm (L*W*H)